

THE INNISFREE ALMANACK

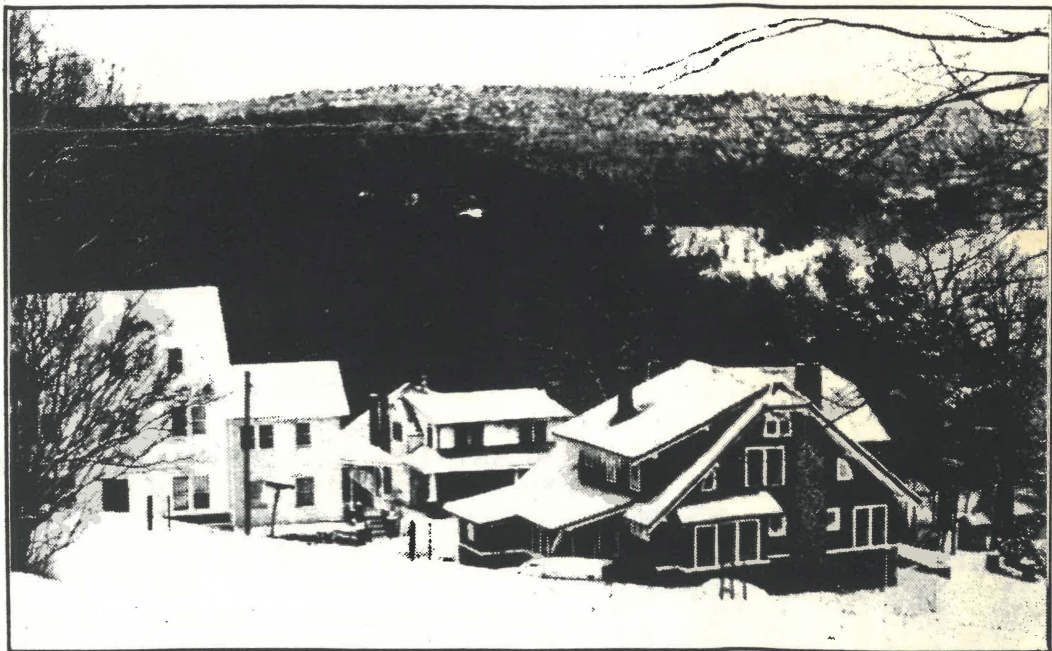


Photo by David Rue

THE ISLE OF INNISFREE

I will arise and go now, and go to **Innisfree**,
And a small cabin build there, of clay and wattles made:
Nine bean-rows will I have there, a hive for the honeybee,
And live alone in the bee-loud glade.

And I shall have some peace there, for peace comes dropping slow,
Dropping from the veils of the morning to where the cricket sings;
There midnight's all a glimmer, and noon a purple glow,
And evening full of linnet's wings.

For always night and day, I hear [the] water lapping,
With low sounds by the shore
While standing in the roadway or on the pavements gray:
I hear it in the deep heart's core.

--William Butler Yeates (1893)



THE INNISFREE ALMANACK

Editor: Tom Rue Graphic Artist: Jill E. Behling

INNISFREE CORPORATION

President:	Clyde B. Rue	Additional Trustees:	John H. Prickett
Vice President/Treasurer:	Ann Rue		Carol A. Prickett
Corporate Secretary:	Thomas S. Rue		Robert Woldin
Honorary Trustees:	William W. Brown		John D. Rue
	P. Clarke Maylone		David L. Rue
	William A. Rue		Paul Gerhard

ENCOUNTER WORKSHOP

MILANVILLE — An intensive weekend encounter group workshop called the **Innisfree Growth Laboratory** will take place at the Innisfree Hostel and Conference Center, April 18 to 20, 1986. Encounter groups are designed to increase personal awareness and enhance communication skills.

Group facilitators will be drawn from a pool of professionals who are experienced in leading encounter groups. Each will be a qualified private practitioner who is trained in counseling and psychology.

The \$100 participation fee covers all expenses for the weekend, including two nights' lodging and five home-cooked meals.

Local residents and others who are interested in registering for the weekend workshop, or who desire more information, should contact Thomas S. Rue, at 717/729-7762; or write to P.O. Box 47, Milanville, PA 18443.

STOP

POLLUTION OF STREAMS

PROSPECTUS

THE INNISFREE ALMANACK is intended to be a collection of essays, notes, prose, and other writings by or for people who are involved with the Innisfree organization and who have stayed at the Milanville facility.

Included are copies of local news-releases which have appeared recently about Innisfree. Grateful acknowledgement is expressed to Glenn Pontier, Managing Editor of THE RIVER REPORTER in Narrowsburg, New York for providing Innisfree this coverage; as well as for use of the paper's typesetting equipment for the headlines and photo-captions in this edition.

The purpose of this "almanack" is to keep the entire group of Innisfree's friends posted and aware of activities at and near Milanville, both in advance and in retrospect. We would very much like to have you involved with this newsletter by publishing your input. Anyone on our mailing list is encouraged to submit prose, press-releases, or other items. Artwork and photography will also be considered, subject to our graphic restrictions. Local groups or businesses who are interested in free or inexpensive advertising (depending on the nature of the product or event), are invited to contact the editor.

To cover our costs, we are requesting a voluntary contribution of \$5.00 or more per year. We hope to create a revolving fund in order for the newsletter to carry its own financial weight.

THE INNISFREE ALMANACK will be published "from time to time"; that is, as often as we have material to make a mailing worthwhile. Our goal is to publish a newsletter approximately every three or four months. In any event, your subscription will entitle you to four editions. The ALMANACK's success or failure is entirely in your hands. Original literary and artistic contributions are emphatically solicited. Content may pertain to subjects related to any topic of interest or concern to visitors to the Milanville/Skinners Falls area.

Since Innisfree Corporation currently has no official statement of philosophy, any opinions expressed in THE INNISFREE ALMANACK are necessarily those of the writer.

Innisfree Corporation is a private not-for-profit corporation, not connected with any government body or agency.

All contributions are tax-deductible.

Tom Rue, Editor
THE INNISFREE ALMANACK
P.O. Box 47
Milanville, PA 18443

(717) 729-7762

Innisfree Growth Laboratory

MILANVILLE — At a recent meeting of its board of directors, Innisfree Corporation announced plans for sponsoring a biannual program at its camp facility. The **Innisfree Growth Laboratory** is modeled after a similar program which was sponsored by Trenton State College in New Jersey for over 25 years. It will retain many of the same encounter-group facilitators who were employed by the college.

Encounter-groups are designed to help relatively normal, healthy people gain psychological insight to their behavior and interactions, and to give participants an opportunity to experiment with new and more productive ways of expressing themselves and communicating in a "laboratory" group of 10 to 12 people.

According to Tom Rue, the coordinator of the new program, the college's weekend workshops had been held in Milanville since October of 1984 and have typically involved groups of around 60 people per weekend. Rue holds an M.A. degree in counseling services from Rider College and a B.A. in psychology from Trenton State.

Rue presented a 20 page proposal to Innisfree at the November 30th meeting, detailing the new program. Participants will pay \$100 each to attend the weekend workshop each May and September. Under Trenton State's sponsor-

ship, participants paid only \$10, with a student activities fund picking up the difference. Foundation, corporate, and private funding is being sought for financial aid to individuals who would otherwise be unable to attend, and to reduce the fee charged per person.

Also to raise revenues for the new program, a "Comet party" will be hosted at Innisfree, on April 11, 1986, "to commemorate the 1986 visitation of the Comet Halley." The Friday night party will be open to the public, and will be promoted as a drug-and-alcohol-free experience suitable for both adults and adolescents. The night of April 11th was chosen because that is when the comet will pass closest to the earth. A donation of \$5.00 per person will be requested, as well as a covered dish or other edible contribution. The highlight of the party will be the showing of the videotaped film **Night of the Comet**, followed by folk music.

Participants in the Innisfree Growth Lab will be drawn from among the graduate students and alumni of the college's program, as well as through advertising.

Local residents who are interested in participating in the Innisfree Growth Lab, attending the Comet party on April 11th, or involving themselves with other activities at Innisfree, may contact Tom Rue at 717/729-7762.

Join Us At This Year's Growth Lab

Dates:

April 18-20, 1986

A Note To Participants...

By Tom Rue

The entire readership of this newsletter is invited to participate in the Innisfree Growth Laboratory this spring from Friday, April 18th through Sunday afternoon, the 20th. An application form appears to the right. The opening community meeting of the weekend will begin at 9:30 Friday morning.

A participation fee of \$100 is based on a total projected program budget of \$2,838. This amount covers professional fees paid to facilitators, encounter groups, community meetings, five meals, and two nights' lodging. It also includes such administrative costs as advertising, printing, and postage (apart from this newsletter). Each paid staff-member (of which there will be five) will receive \$200 for their services over the weekend and attendance at the planning meeting. Any remaining monies, after all expenses have been paid, will be placed in a special bank account and used for financial aid at the next lab.

continued next page

INNISFREE GROWTH LABORATORY

continued from page 4

In order to help with the advance capital necessary to promote the weekend, we need to ask people who intend to come to get their money in as quickly as possible. To encourage this, we are offering a 5% discount to those who register before March 17th. Applications will be accepted until April 11th.

Tony Evangelisto, an assistant professor of counseling at Trenton State College (NJ), has agreed to be present as resident consultant. Facilitators will be drawn from the pool of professionals who have experienced TSC's "Personal Growth Lab". Each will be a qualified private practitioner who is trained in counseling and the facilitation of encounter-groups.

The Innisfree Growth Lab is not in competition with PGL, and therefore is not open to undergraduate students at Trenton State College. All such applicants will be referred to the student organization at TSC.

THOSE OF YOU WHO HAVE ATTENDED THIS WORKSHOP IN THE PAST: Even if you can not attend this spring, your tax-deductible contribution will help us carry on Trenton State's tradition of a biannual growth lab open to all, and at the same time afford a valuable opportunity for humanistic personal growth to a potentially large number of people who have not yet had this type of experience.

I hope that Innisfree will be a place for you where you will feel comfortable coming for a weekend to relax, even aside from the lab. With friends, organized groups, or just by yourself, you are invited to come and enjoy the nature of this upper Delaware River valley.

COMET PARTY!

April 11, 1986

- Pot-luck dinner (bring your favorite dish) at 6 p.m.
- NIGHT OF THE COMET shown on video at 9 p.m.
- Music (recorded or live) after the movie.
- No drugs or alcohol.
- Contributions benefit I.G.L.

RECREATION HALL, INNISFREE
Milanville, PA



Lab participants eat their dessert at INNISFREE'S main lodge. (This photo was taken at the spring '85 Personal Growth Laboratory, sponsored by Trenton State College.)

4/85

Innisfree — 15 year reunion

MILANVILLE — Innisfree has been on the River Road in Milanville for over 15 years, yet few locals know exactly what goes on there; or if they think they do, their impressions may be based on old memories of Innisfree Corporation's organized camp program in the summers of 1970 and 1971.

Spearheading the energy behind obtaining the funding to make the original down-payment on the organization's Milanville facility were Bud Rue as president, Bill Brown, and Clarke Maylone, three teachers from Montclair, New Jersey. The educational program they and their associates organized was idealistic and not atypical of that era.

Since the discontinuation of the original camp program in 1971, Innisfree has remained open, with some interruptions, as a not-for-profit "public eating and drinking place." It now operates a hostel and conference center, in addition to providing corporate sponsorship to the Innisfree Growth Laboratory.



An informal 15 year reunion of 1970 Innisfree campers was held recently in Milanville. Pictured (from left) are: Ann, Tom and Bud Rue in the back row; Nick Koechln, Catherine Clifford, Ron and Elaine Burger, and Michael Schlanger in the front row.

Ann Rue, who with her husband Bud, makes the 250-mile round trip from their suburban New Jersey home every weekend (and has for the last three years), explains that one of Innisfree's present services is "to provide lodging and meals for young people of limited means who have an appreciation for the area."

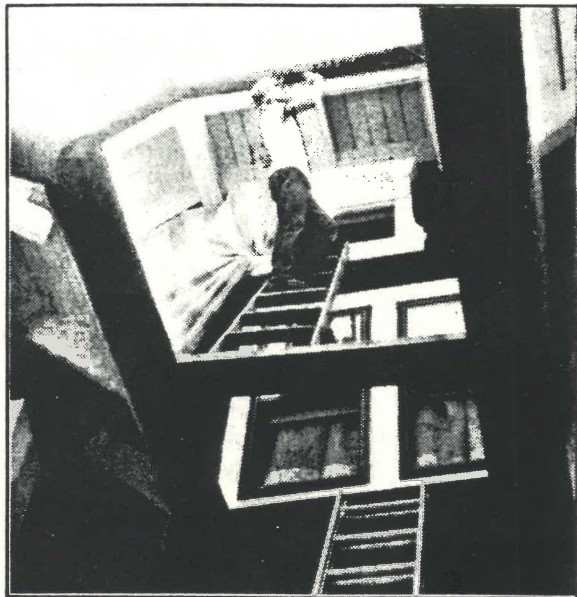
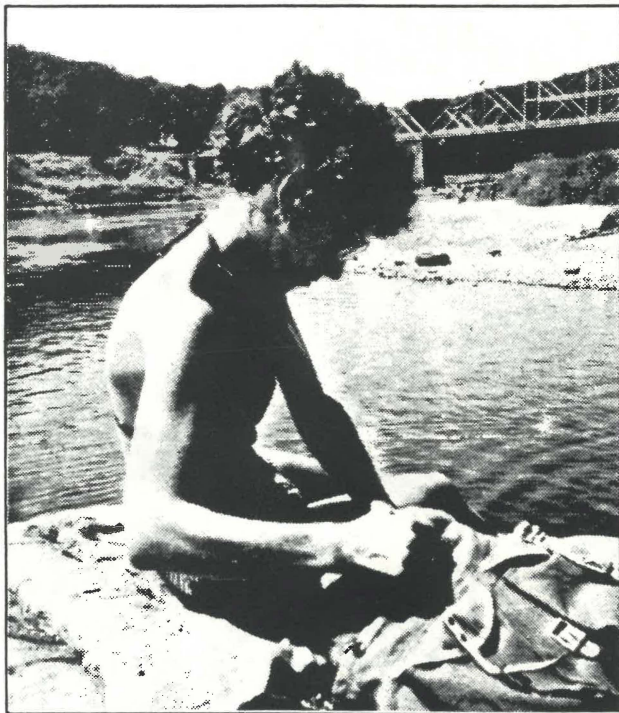
The people Ann was talking about have been coming, sometimes alone or in couples, and some in groups as large as 70. Nearly every weekend, Bud and Ann serve as host and hostess to educational and recreational groups from secondary schools, social service agencies, colleges, and private industry. Since no one at Innisfree draws a salary for their efforts, costs are kept to an absolute minimum. Home-cooked meals are served family style in the main lodge.

The most recent group to stay at Innisfree was a student organization from Lawrence High School in New Jersey, where Bud Rue is a teacher. The group is called the **Innisfree Club**, and exists to foster peer-group interdependence and friendships in the school. Members of the club commit not to use drugs or alcohol or create a disturbance in the area on their weekend visits to Milanville and the river at Skinners Falls. (Winter groups enjoy sliding down the hill on truck innertubes.) Typically, before each warm-weather group goes home at the end of the weekend, Rue accompanies them to the rapids area there, and together the group collects several garbage bags full of empty beer cans, broken glass, etc. discarded by canoers and others who are not concerned about the ecology of the area. Rue reports that he witnesses positive effects from these group-building experiences at Innisfree when he sees the students in school, back in New Jersey.

An example of the type of large group which Innisfree would like to attract more frequently is the Personal Growth Laboratory (PGL) from Trenton State College. Beginning in October of 1984, PGL began using the Innisfree facility for its weekend workshops in interpersonal communications, sometimes filling the place to its capacity.

When the college cancelled the weekend experience early last month for budgetary reasons, Innisfree and some of the professional group-facilitators who were involved stepped in and agreed to take a financial loss in order to salvage what they viewed as a valuable program. The ensuing weekend was a success, and there seemed to be sufficient interest to warrant planning another similar Innisfree Growth Lab in the spring of 1986.

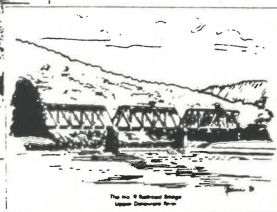
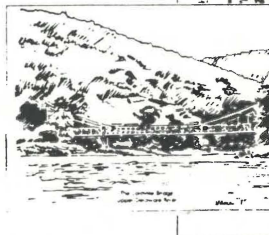
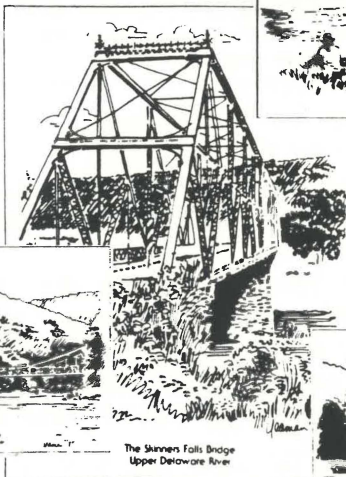
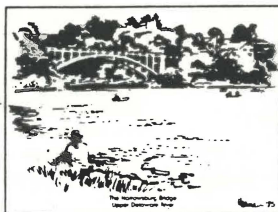
We would like to expand our mailing list of INNISFREE campers from past summers. If you can put us in touch with anyone, please send the information to INNISFREE, P.O. Box 47, Milanville, PA 18443



Daphne Weiner, left, relaxes on the Delaware, down river from the Skinners Falls Bridge. Daphne was a camper at INNISFREE in 1971. 8/85

Andy Prickett, above, repairs a beam under an eave of the main lodge. 8/85

8 Cards per Package
(2 of each design)



Printed in Grey on heavy
Rayole Certificate Stock

The Skinners Falls Bridge
Upper Delaware River

Original Drawings
by
Barbara Yeoman

BRIDGES OF THE UPPER DELAWARE Notecards

Only \$3⁵⁰

plus 75¢ postage & handling

Send \$3⁵⁰ plus 75¢ postage
and handling to:

THE RIVER REPORTER
P.O. Box 20
Narrowsburg, N.Y. 12764

Subscriptions also available
at the above address
Full Year - \$15.00
Half Year - \$9.00
published weekly

Work Around The Place . . .

During our 15-year reunion on August 17th and 18th, Ron Berger and Chris George did some digging beside the south wall of the chicken-coop. Ron also trimmed the aluminum roof above the spot so the foundation will not erode further (which has caused the foundation to crack). Much digging remains to be done before the repairs will be completed.

A PGL work-party took place in the middle of July. Construction was done on two new showers and a nearby bathroom in the hostel commons, as well as landscaping and other odd jobs. Those who helped: Miki Albanese, Don Costello, Dave Fox, Jim Miller, Tom Rue, Dianne Schlesinger, Dan Titus, and Ed Wittmann. Doug Martin, Andy Prickett, Bud Rue, and Chris Sanderson also contributed to this project. Tater Bug Tyler did the plumbing.

Angie, Ben, Chris, and Brenden Acardi helped gather apples, along with an "Innisfree Club" group of teenagers from New Jersey. There are presently three barrels of cider on tap at Innisfree.

Joe Radlinski and Drew Hansler cleaned up the debris around all of the cut apple trees on the Innisfree hill. Following this, Jack Plotz and his son Tom cut up one of the trees (the one behind the cistern) and carted the firewood back to the main house for winter burning.

Underpinnings to the front porch of the main house were rebuilt in August by Doug Martin and Bud Rue. That same weekend, Ellen Maddux and Miki Albanese painted part of the exterior of the cottage.

Andy Prickett continued work painting the main house trim, which we hope will be finished next year. He also spent two whole days retrenching a



Ron Berger and Chris George dig out eroded soil beside the south wall of the chicken coop.

8/85

One of Innisfree's major purposes is "to provide lodging and meals for young people of limited means who have an appreciation for the area". If you fall into this category, contact us about working around the place with us, in exchange for your room and board. We ask for three hours of work per night's lodging and meals.

Open Year 'Round

Bunk rooms (2-8 per room)
\$7/person/night
(Group rates available)

Lodge rooms (double beds)
\$20/night/room

Cottage (with kitchen/bath)
\$125/week

Apartment (with kitchen/bath)
\$175/week

MEALS

Breakfast	\$3
Lunch	\$4
Dinner	\$6

The Innisfree Hostel is now open all week, year round. Tom Rue has taken up residence at the camp.

Meals, prepared by Ann and Bud Rue, continue to be available on off-season weekends, as well as during the summer months seven days a week.

For those who cannot afford regular hostel rates, special arrangements can be made to work in exchange for room and board. Generally, people work three to four hours a day for each night they stay at Innisfree.

Innisfree does not discriminate on the basis of race, religion, or sex.

APPLICATION FORM

INNISFREE GROWTH LABORATORY

April 18-20, 1986

NAME _____ AGE _____

ADDRESS _____

PHONE (home) _____ (work) _____

OCCUPATION _____ IF STUDENT: Where? _____

ENCLOSED: \$100 (5% off if in before 3/17/86)

Class/year? _____

Major? _____

HAVE YOU EVER ATTENDED THIS TYPE OF WORKSHOP BEFORE? _____

PLEASE EXPLAIN WHY YOU WOULD LIKE TO ATTEND THIS WORKSHOP _____



SUBSCRIPTION FORM

THE INNISFREE ALMANACK

NAME _____

ADDRESS _____

HOME PHONE () _____

Have you ever visited Innisfree? _____ If so, when? _____

Comments on THE INNISFREE ALMANACK _____

ENCLOSED: () \$5.00 contribution (four issues)

() Other amount (SPECIFY) \$ _____

THE INNISFREE ALMANACK
P.O. Box 47
Milanville, PA 18443

(over)

To the Editor:

8/22/85

We are writing to bring to your attention Innisfree's hostel facility at Skinners Falls on the upper Delaware. Our non-profit hostel exists to provide low-cost lodging and meals for such staff-training, recreational, client-oriented weekends, or other groups as might be sponsored by your agency. Innisfree is located in rural Wayne County, Pennsylvania at a favorite rapids on the upper Delaware. Canoeing and tubing, as well as being an excellent swimming and fishing location. Innisfree is at the center of the Upper Delaware National Recreation Area, maintained by the National Park Service. It is a secluded setting, and especially beautiful when the autumn colors are at their peak. In the winter, the rural and pastoral nature of the facility offers the kind of isolation which is ideally conducive to group cohesiveness.

We can accommodate groups ranging in number from 10 through 70 in our summer dormitory, from April 15th through October 15th. This building has hot showers, inside toilets and two- or three-person bunk rooms for use with sleeping bags. We can accommodate winter groups in sizes of 2 through 14 (6 in bunks with sleeping bags, and 8 in more comfortable accommodations — linens and blankets provided), in our main lodge and recreation hall. Because we are a non-profit organization, we are able to set group rates as low as \$35 for a weekend which includes five meals and two nights' lodging.

If you can envision any group within your organization which would be interested in using our services, please call us at (717) 729-7762, or after Labor Day at (609) 883-7601.

Bud and Tom Rue
Group Organizers

P.S. — I will arise and go now, and go to Innisfree. . .

William Butler Yeats

To the Editor:

10/10/85

On 8/30/85 I attended a CAC meeting in Damascus at the NPS headquarters. At one point during this meeting a woman came forward with an article in a local newspaper regarding a place called INNISFREE.

The article seemed to indicate some connection with the NPS. Park Supt. Hutzky immediately denied any connection and said he would find out where and who these people were and clarify the situation. Several other remarks were made and once again Mr. Hutzky volunteered that he would seek out these "unknown to him" people and send a letter to them stating they had no connection with his office. A few more comments were made and someone stated that Innisfree was situated on the river. Mr. Hutzky quickly responded declaring that Innisfree was not on the river, but was a few hundred feet up the hill. Does Park Supt. Hutzky or the NPS have any connection with Innisfree? Quite frankly, I find this very confusing. Is the NPS involved, or not?

Richard A. Matz
Damascus

To the Editor:

9/5/85

In a recent issue of the "River Reporter", a letter from Innisfree was published. The letter implied an association between Innisfree and the National Park Service. Several valley residents have asked us to comment on the contents of this letter.

The National Park Service has no association with Innisfree, implied or otherwise. We don't discredit youth hostels, as they have proven beneficial in other places, particularly in Europe. However, such a program must succeed on its own merits, rather than through an implied relationship with the National Park Service.

Sincerely yours,

John T. Hutzky, Superintendent

Upper Delaware Scenic & Recreational River

from THE RIVER REPORTER

LETTERS
TO THE
EDITOR



To the Editor:

10/10/85

We wish to thank John Hutzky of the National Park Service for making it clear in your columns that there is no connection or association between Innisfree's non-profit hostel in Milanville and the Park Service. We regret the ambiguity in our earlier letter which gave rise to this confusion. Innisfree is a private not-for-profit corporation.

We are inclined to remind Mr. Hutzky that if the National Park Service is to succeed in its efforts in this valley, it will have to be on its own merits, in order to gain the support of the local communities.

Innisfree neither supports nor opposes the Park Service in these efforts in Wayne and Sullivan Counties; we simply acknowledge its existence. In no way do we wish to either align ourselves with its goals or imply our approval of its methods.

Sincerely yours,

INNISFREE CORPORATION

Bud and Tom Rue

President & Corporate Secretary

INSIDE:

- INNISFREE GROWTH LAB MATERIAL
- NONPROFIT YOUTH-HOSTEL NEAR SKINNERS FALLS
- INNISFREE: 15 YEAR REUNION
- SUBSCRIPTION OFFER



INNISFREE
P.O. Box 47
Milanville, PA 18443

FIRST CLASS

TO:

FORWARDING AND
ADDRESS CORRECTION REQUESTED
RETURN POSTAGE GUARANTEED