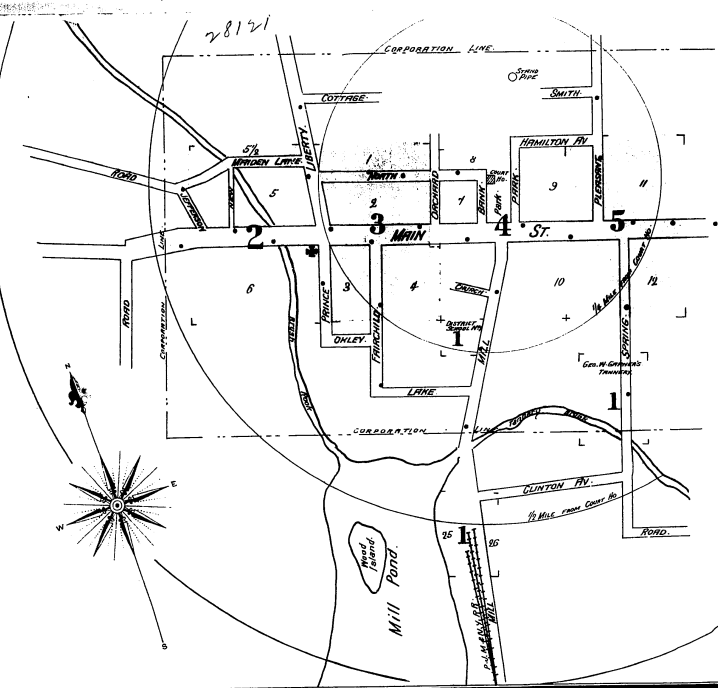


28121
May 1897

NOTE.
Water Works owned by Village - 2000 Feet 60' High
18 1/2 Miles in Circ. 1000' High Capacity 100,000 Gallons
Supply of Cottages Electric Power 100,000
Only one fire - Street car company - 100,000
Mines - Supply (unlimited) from the village
1/2 mile - 2 miles - 100' - 100' - 100' - 100'
62' - 10' - 10' - 10' - 10' - 10' - 10' - 10'
1/2 mile - 1/2 mile - 1/2 mile - 1/2 mile - 1/2 mile - 1/2 mile - 1/2 mile - 1/2 mile
1/2 mile - 1/2 mile - 1/2 mile - 1/2 mile - 1/2 mile - 1/2 mile - 1/2 mile - 1/2 mile



INDEX.

STREETS.	NUMBERS.	SPECIALS.	NUMBERS.
Bank, B	4	Bohem Hotel, B	3
Church, C	4	Brewer Lavin Hotel, C	3
Fairchild, F	3	Central Hotel, C	3
Hamilton Ave., H	1-8	County Court House & Jail, C	3
Jefferson, J	2	District School No. 1, D	1
Liberty, L	1-10	Episcopal Church, E	4
Main, M	101-111	Garner, G. W., Tannery, G	1
Maiden Lane, M	2	Hotel Rockwell, H	2
Mill, M	101-111	Mansion House, M	4
Spring, S	301-324	Mapleoram, G. F., Carriage Park, M	3
		Methodist Episcopal Church, M	3
		Monticello Hotel, M	3
		Monticello Marble Works, M	3
		Musie Hall, M	3
		Orchard Villa, O	4
		P. J. M. & N. Y. R. Depot, P	1
		Presbyterian Church, P	4
		Republican Printing, R	4
		Sullivan Co. Dairy, S	1
		Thomson, A., Plan'g & Elder Mill, T	2
		Watchman Printing, W	4

NOTE.—House Numbers given are arbitrary.

